



Residential segregation and diversity in Barcelona after unprecedented international migration

Albert Sabater – asabater@ced.uab.es
Centre d'Estudis Demogràfics

Jordi Bayona – jordibayona@ub.edu
Universitat de Barcelona



Objectives

1. Describe population growth after recent immigration to Spain and Barcelona
2. Analyse the level and direction of change in residential segregation in Barcelona
3. Assess population re-distribution in the metropolitan area of Barcelona



Data sources

Population data

- Census (every ten years, last in 2001)
- Municipal Register (yearly)

➔ Available for Census Output Area

Flow & event data

- Residential Variation Statistics (yearly)
- Vital statistics (yearly)

➔ Available for Districts (sub-municipal)



Methods

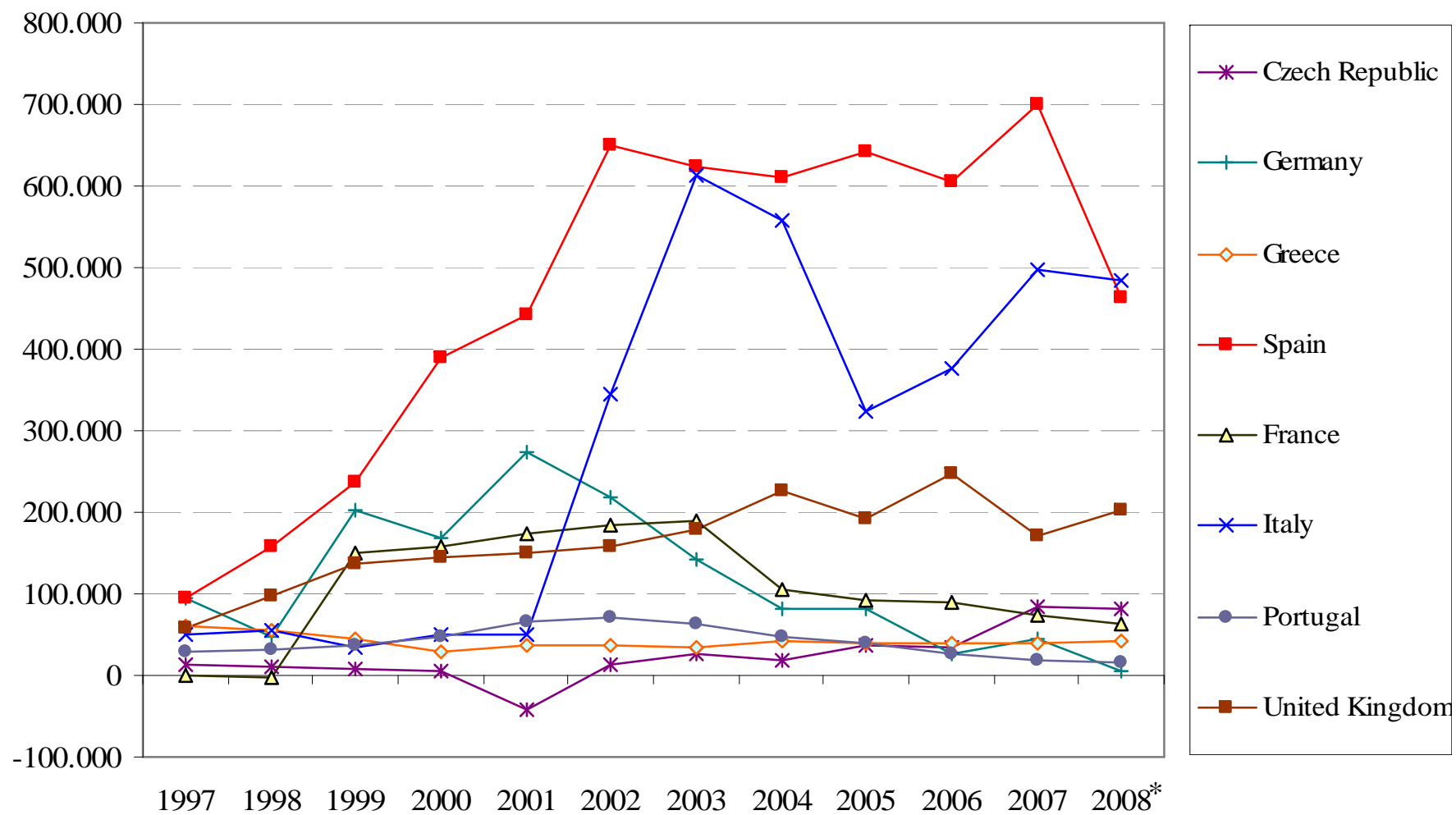
Segregation indices

- ID: Index of Dissimilarity (an unequal geographical spread)
- P*: Index of Isolation (high proportion of ethnic groups)

Demography of immigration

- Net migration (arrivals – departures)
- Natural change (births – deaths)
- Migration effectiveness (re-distribution)

Net migration in selected EU countries, 1997-2008



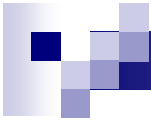
Source: Eurostat. The asterix (*) denotes provisional data.

Year of arrival in Barcelona of Non-Spanish, 2007

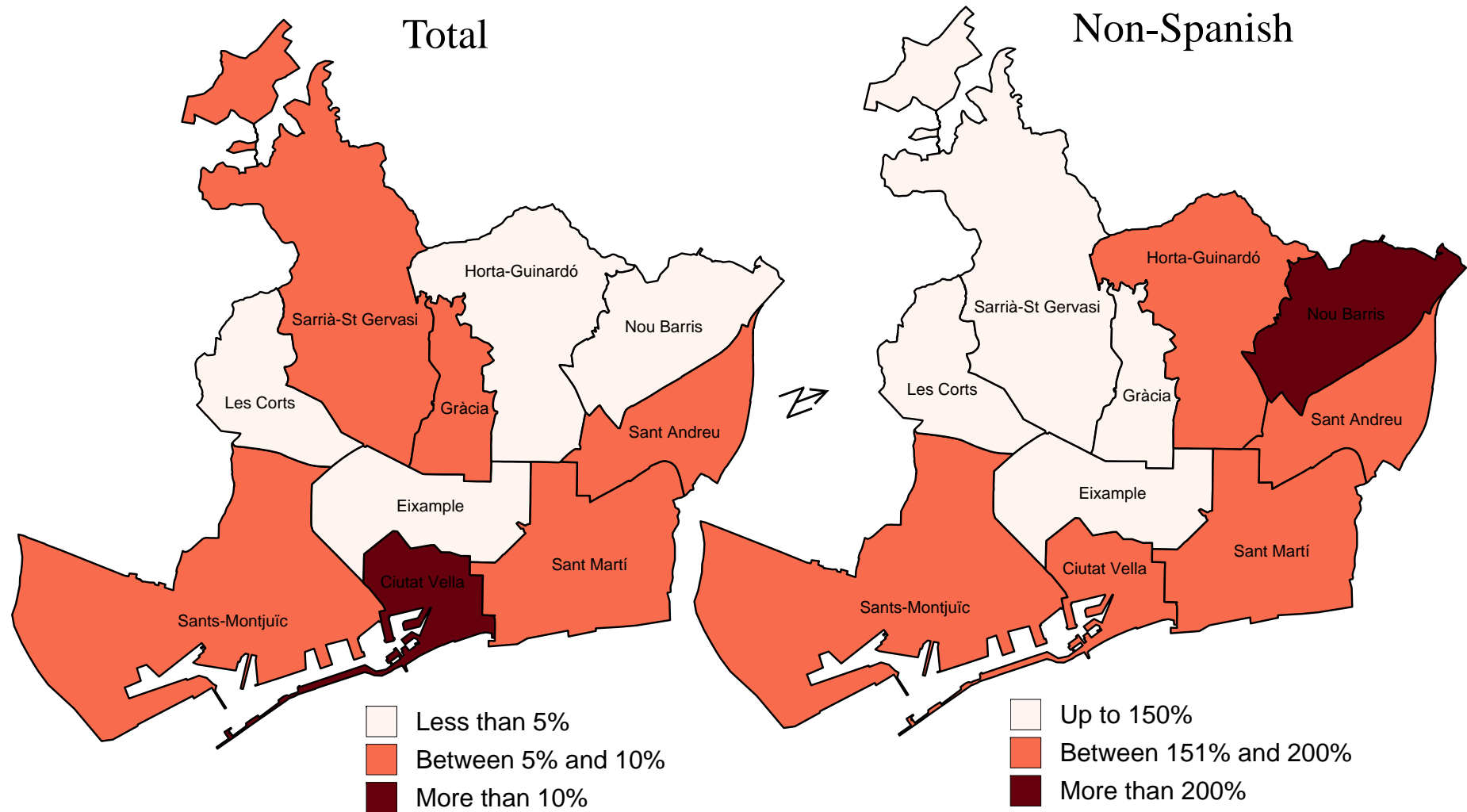
| 2007 | Total arrivals | Arrivals | | | |
|-------------|----------------|----------|-----------|------------|-----------|
| | | <1 year | 1-5 years | 5-15 years | >15 years |
| Non-Spanish | 259.760 | 73.201 | 160.515 | 22.889 | 3.155 |
| % | 100.0 | 28.2 | 61.8 | 8.8 | 1.2 |

Population of Barcelona by nationality, 1986-2007

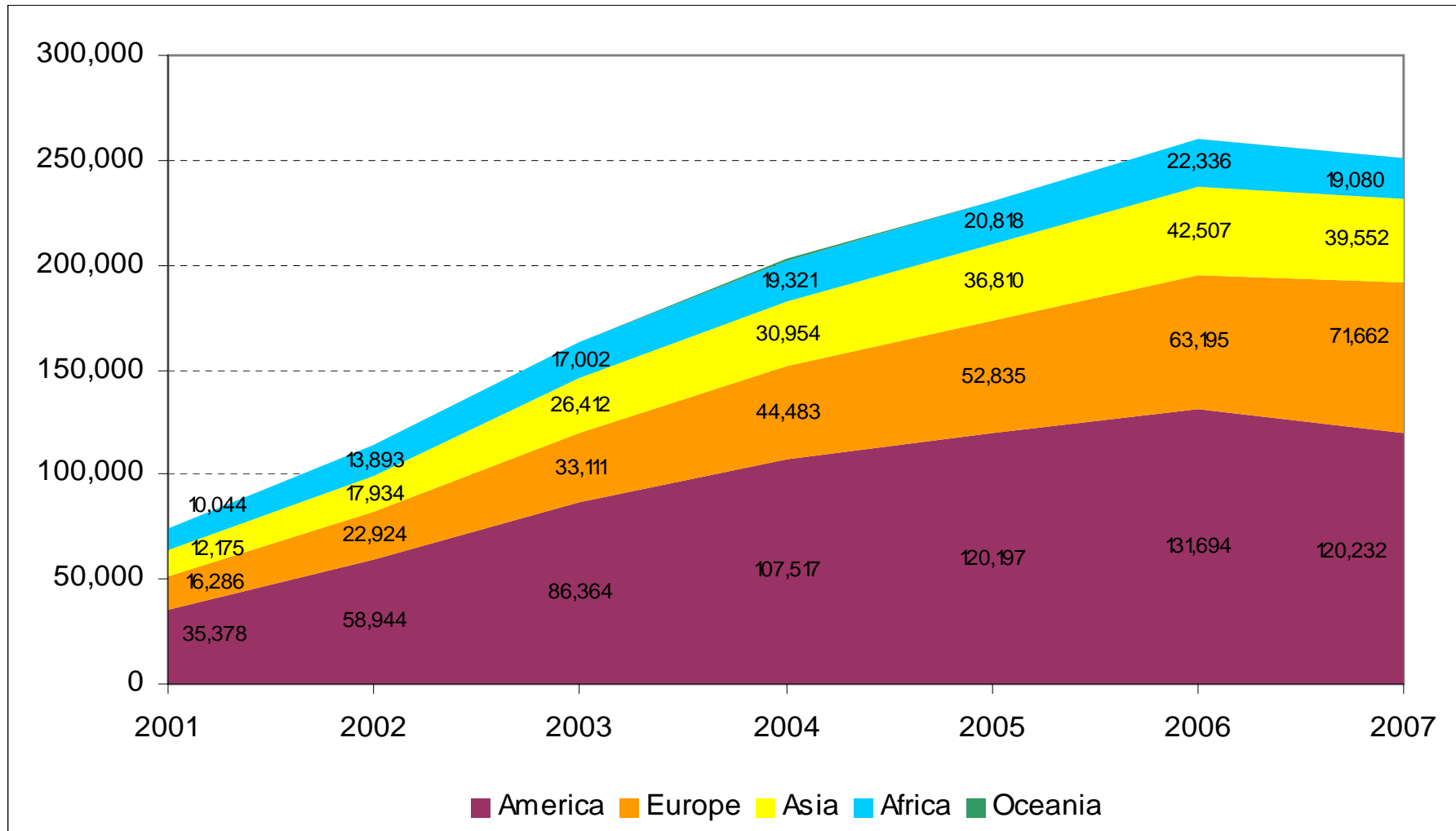
| Year | TOTAL | % | Spanish | % | Non-Spanish | % |
|------|-----------|-------|-----------|------|-------------|------|
| 1986 | 1.701.812 | 100,0 | 1.682.351 | 98,9 | 19.401 | 1,1 |
| 1991 | 1.643.542 | 100,0 | 1.620.140 | 98,6 | 23.329 | 1,4 |
| 1996 | 1.508.805 | 100,0 | 1.479.746 | 98,1 | 29.043 | 1,9 |
| 2001 | 1.503.884 | 100,0 | 1.408.528 | 93,7 | 95.356 | 6,3 |
| 2006 | 1.629.537 | 100,0 | 1.359.942 | 83,5 | 269.574 | 16,5 |
| 2007 | 1.603.178 | 100,0 | 1.343.408 | 83,8 | 259.760 | 16,2 |



Population change by districts in Barcelona, 2001-2007

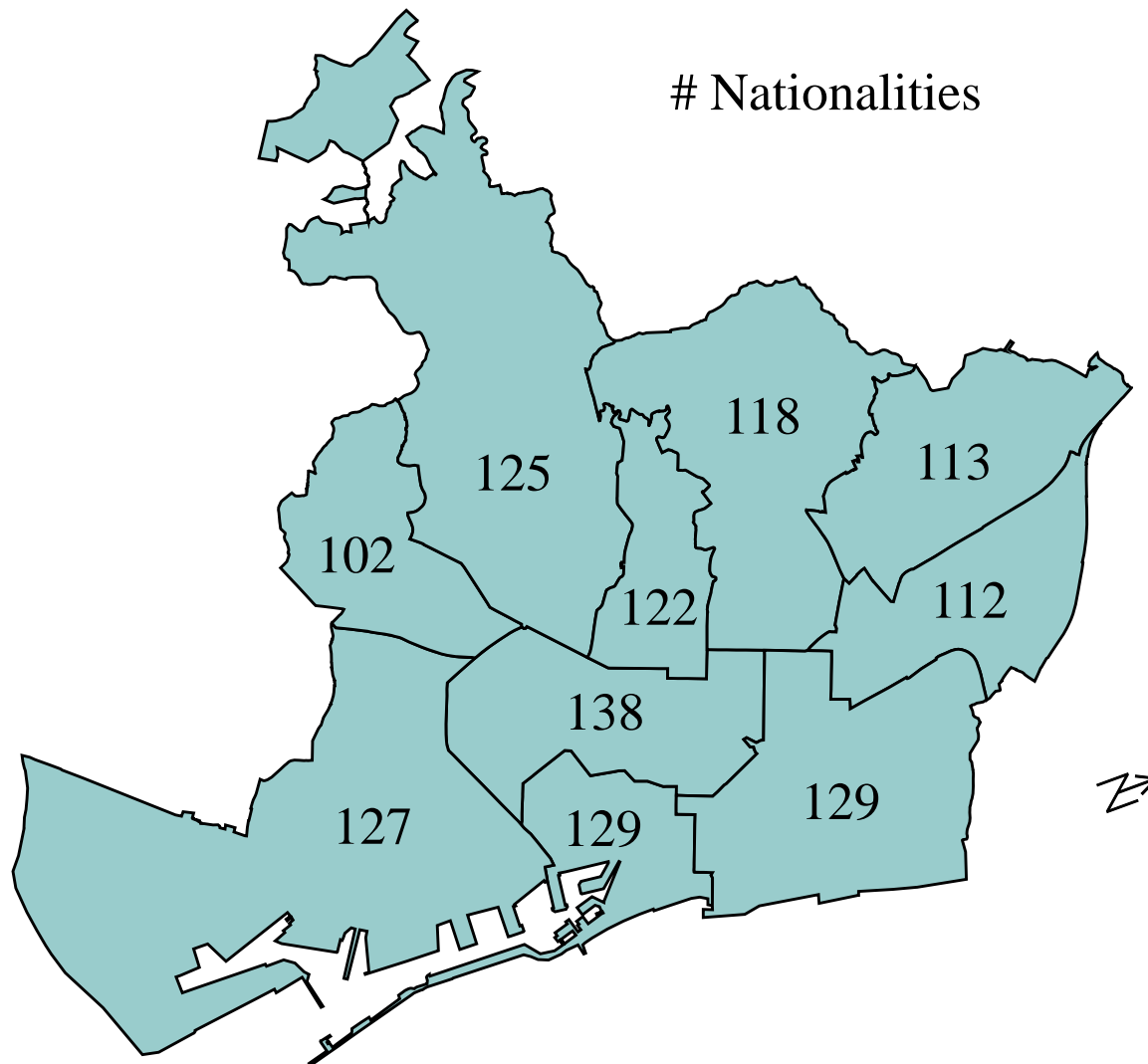


Non-Spanish residents in Barcelona by geographical origin, 2001-2007





Diversity by districts in Barcelona, 2007



Top 15 Nationalities

| | | |
|----|--------------------|--------|
| 1 | Ecuador | 25.351 |
| 2 | Italy | 17.556 |
| 3 | Bolivia | 16.352 |
| 4 | Peru | 14.439 |
| 5 | Morocco | 13.348 |
| 6 | Pakistan | 13.093 |
| 7 | Colombia | 12.436 |
| 8 | China | 11.095 |
| 9 | France | 10.720 |
| 10 | Argentina | 10.074 |
| 11 | Brasil | 6.985 |
| 12 | Dominican Republic | 6.556 |
| 13 | Germany | 6.277 |
| 14 | Philippines | 6.188 |
| 15 | UK | 5.365 |

Residential segregation and population change in Barcelona, 2001-2007

| Index | Geographical origin | 2001 | 2007 | Change |
|--------------------------|---------------------|-----------|-----------|-----------------|
| <i>Evenness</i> | | | | Absolute change |
| <i>ID</i> | Spain | 29.0 | 24.4 | -4.6 |
| | Rest of Europe | 33.2 | 25.9 | -7.3 |
| | Africa | 55.0 | 46.7 | -8.3 |
| | America | 27.8 | 21.1 | -6.7 |
| | Asia | 57.6 | 47.2 | -10.4 |
| <i>Exposure</i> | | | | |
| <i>P*</i> | Spain | 94.1 | 86.1 | -8.0 |
| | Rest of Europe | 2.8 | 6.2 | 3.4 |
| | Africa | 4.2 | 3.6 | -0.6 |
| | America | 5.1 | 8.9 | 3.9 |
| | Asia | 7.6 | 10.3 | 2.7 |
| <i>Population change</i> | | | | % Change |
| | Spain | 1,408,528 | 1,347,247 | -4.4 |
| | Rest of Europe | 20,776 | 67,882 | 226.7 |
| | Africa | 10,684 | 17,623 | 64.9 |
| | America | 49,954 | 111,802 | 123.8 |
| | Asia | 13,942 | 37,951 | 172.2 |

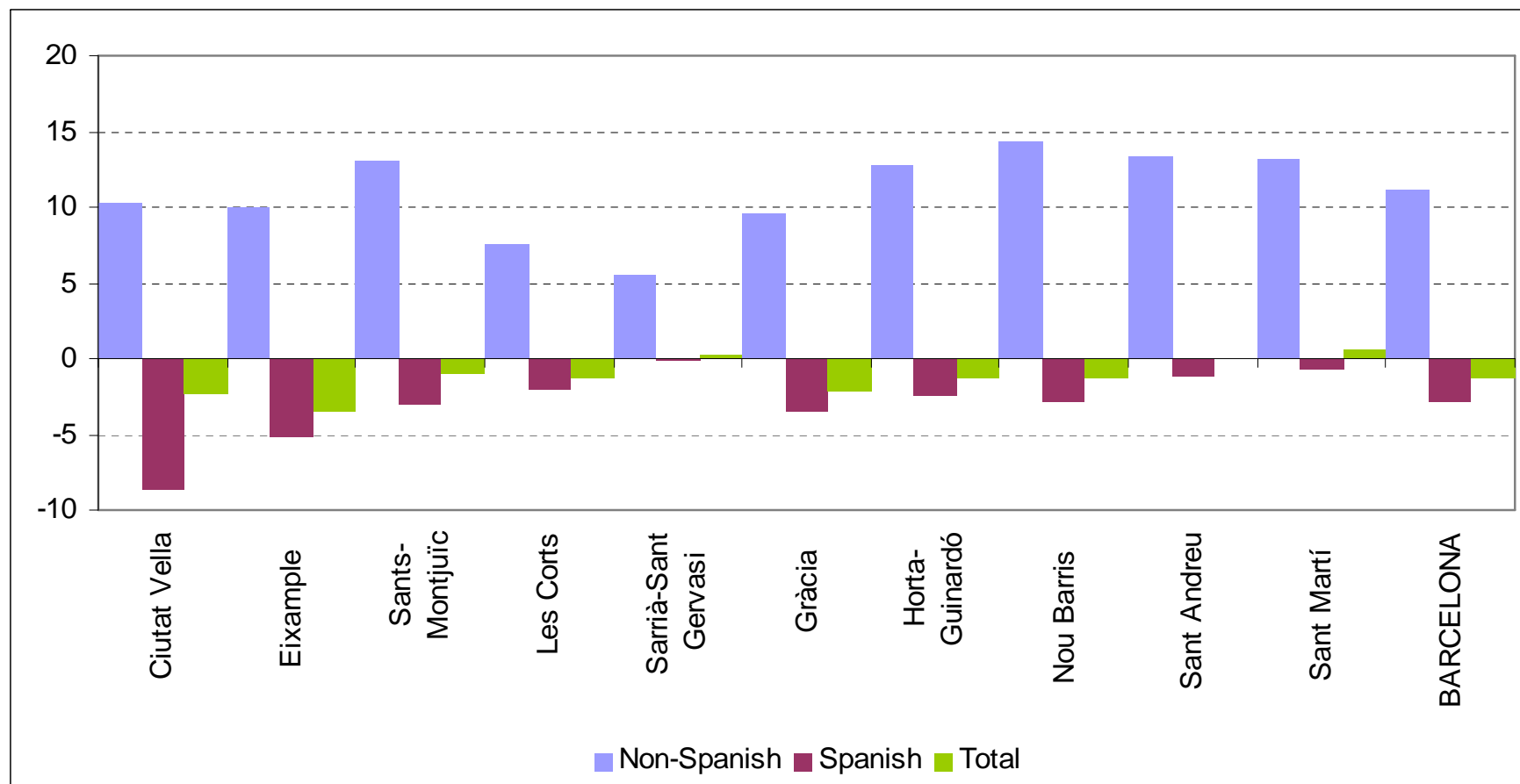
Residential segregation and population change in Ciutat Vella, 2001-2007

| Index | Geographical origin | 2001 | 2007 | Change |
|--------------------------|---------------------|--------|--------|-----------------|
| <i>Evenness</i> | | | | Absolute change |
| <i>ID</i> | Spain | 28.7 | 18.7 | -10.0 |
| | Rest of Europe | 26.1 | 17.7 | -8.4 |
| | Africa | 34.4 | 24.3 | -10.1 |
| | America | 21.5 | 11.7 | -9.8 |
| | Asia | 41.8 | 40.8 | -1.0 |
| <i>Exposure</i> | | | | |
| <i>P*</i> | Spain | 79.7 | 64.3 | -15.4 |
| | Rest of Europe | 6.1 | 11.7 | 5.6 |
| | Africa | 8.5 | 6.3 | -2.2 |
| | America | 9.4 | 10.8 | 1.4 |
| | Asia | 14.3 | 21.6 | 7.3 |
| <i>Population change</i> | | | | % Change |
| | Spain | 67,142 | 61,670 | -8.1 |
| | Rest of Europe | 3,267 | 10,016 | 206.6 |
| | Africa | 3,991 | 4,455 | 11.6 |
| | America | 6,346 | 9,933 | 56.5 |
| | Asia | 6,673 | 12,839 | 92.4 |

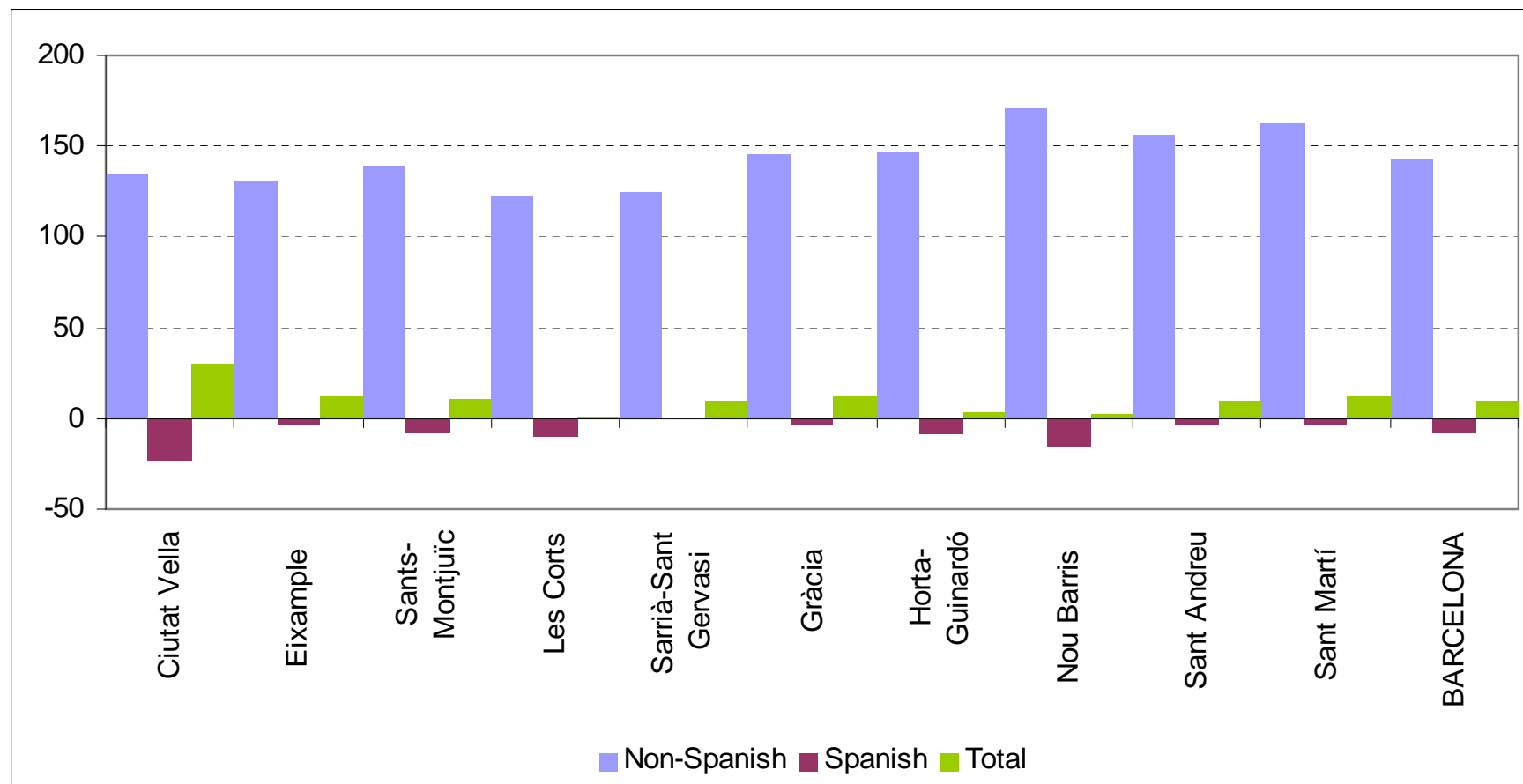
Residential segregation and population change in Nou Barris, 2001-2007

| Index | Geographical origin | 2001 | 2007 | Change |
|--------------------------|---------------------|---------|---------|-----------------|
| <i>Evenness</i> | | | | Absolute change |
| <i>ID</i> | Spain | 23.5 | 25.3 | 1.8 |
| | Rest of Europe | 32.9 | 23.0 | -9.9 |
| | Africa | 43.6 | 44.3 | 0.7 |
| | America | 28.2 | 26.0 | -2.1 |
| | Asia | 63.4 | 41.2 | -22.2 |
| <i>Exposure</i> | | | | |
| <i>P*</i> | Spain | 95.7 | 86.7 | -8.9 |
| | Rest of Europe | 1.1 | 3.0 | 1.9 |
| | Africa | 1.4 | 3.9 | 2.6 |
| | America | 4.6 | 12.8 | 8.2 |
| | Asia | 0.8 | 2.9 | 2.1 |
| <i>Population change</i> | | | | % Change |
| | Spain | 155,050 | 141,843 | -8.5 |
| | Rest of Europe | 920 | 3,695 | 301.6 |
| | Africa | 868 | 2,361 | 172.0 |
| | America | 5,008 | 14,922 | 198.0 |
| | Asia | 316 | 2,161 | 583.9 |

Rates of natural change by nationality in districts of Barcelona, 2002-2007

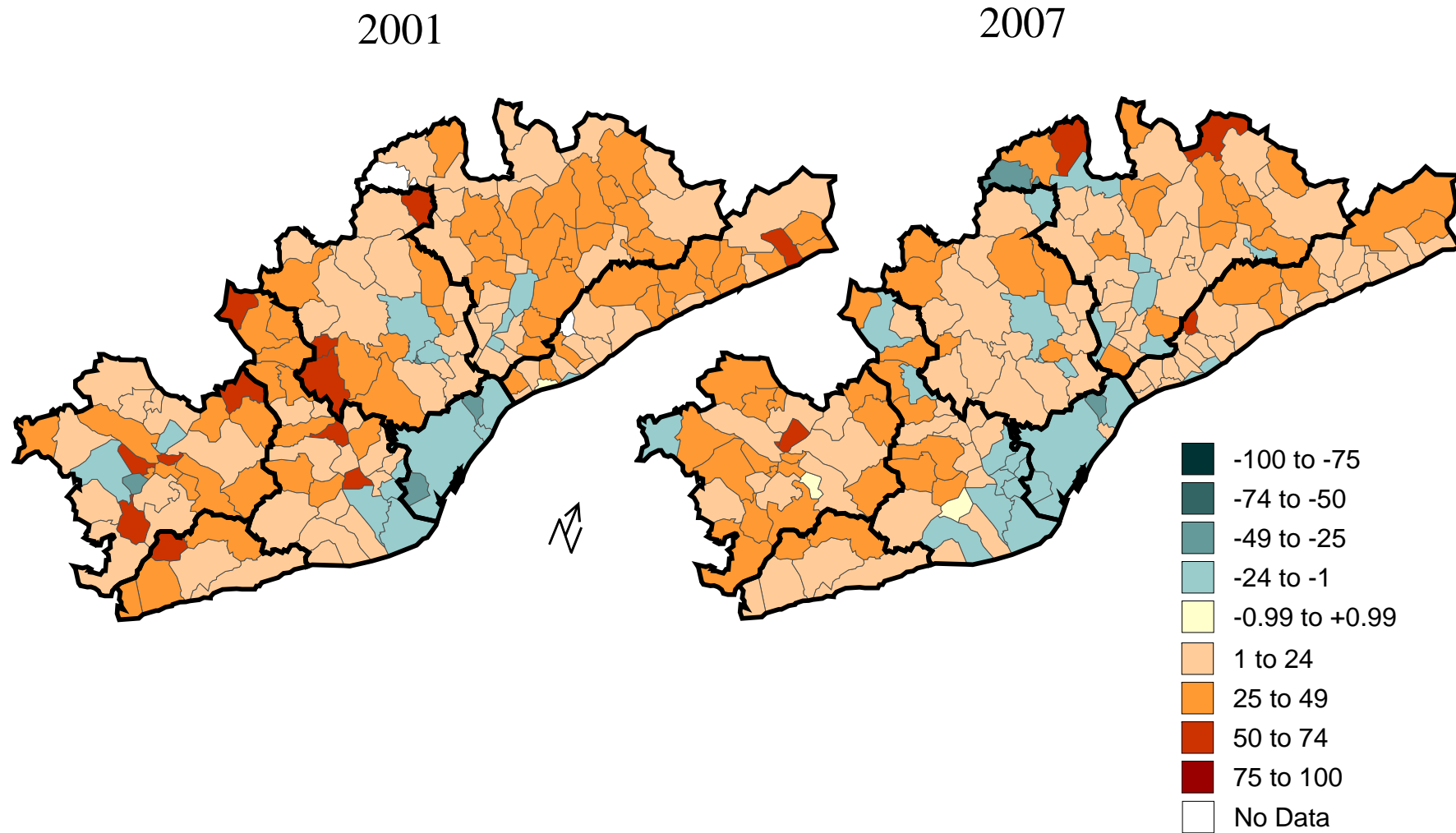


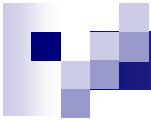
Rates of net migration by nationality in districts of Barcelona, 2002-2007





Migration effectiveness ratios in RMB by Spanish, 2001-2007

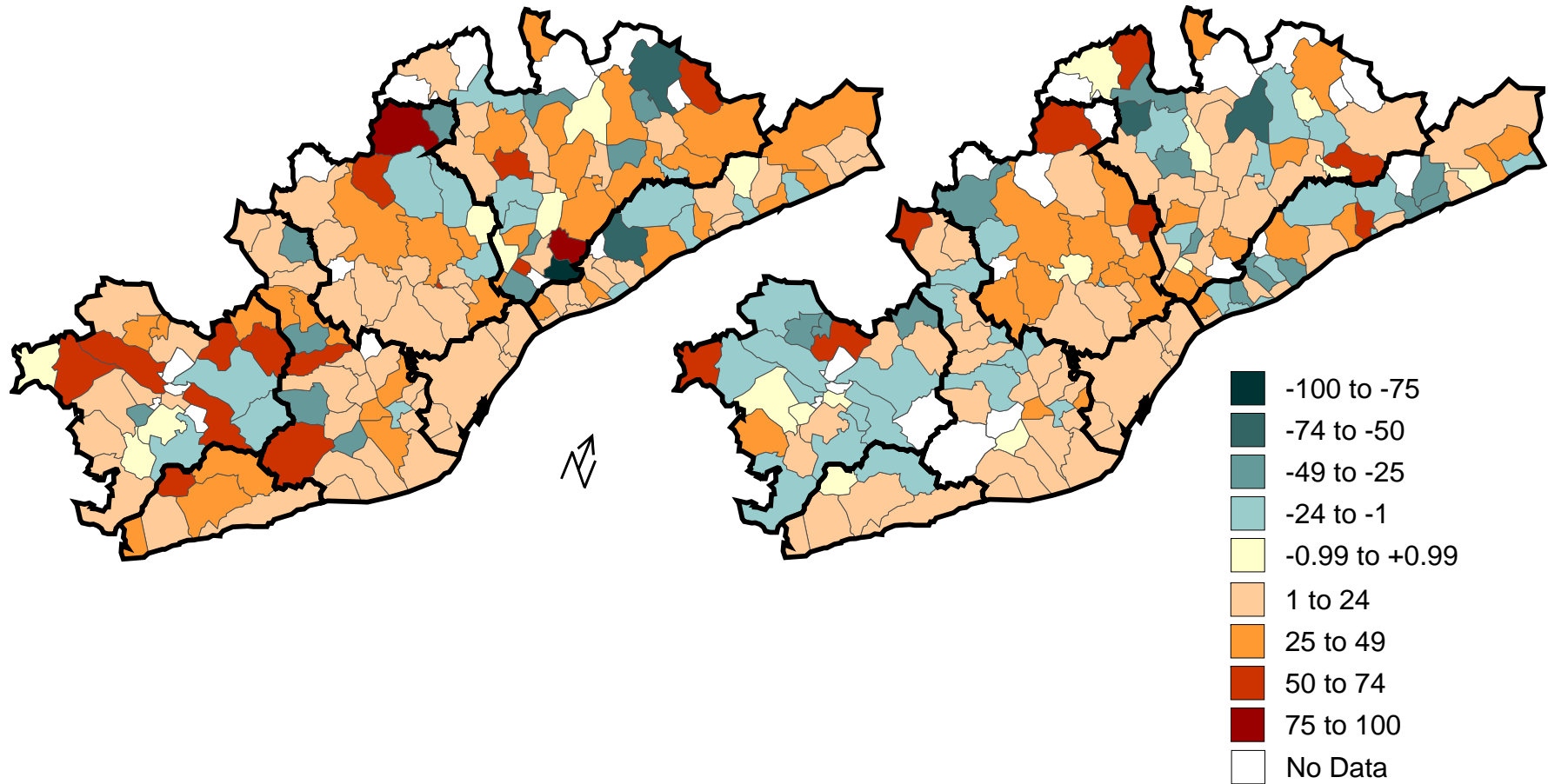




Migration effectiveness ratios in RMB by Non-Spanish, 2007

European

African

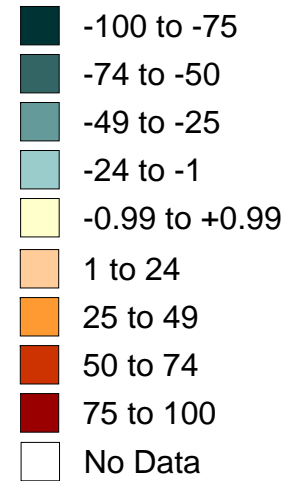
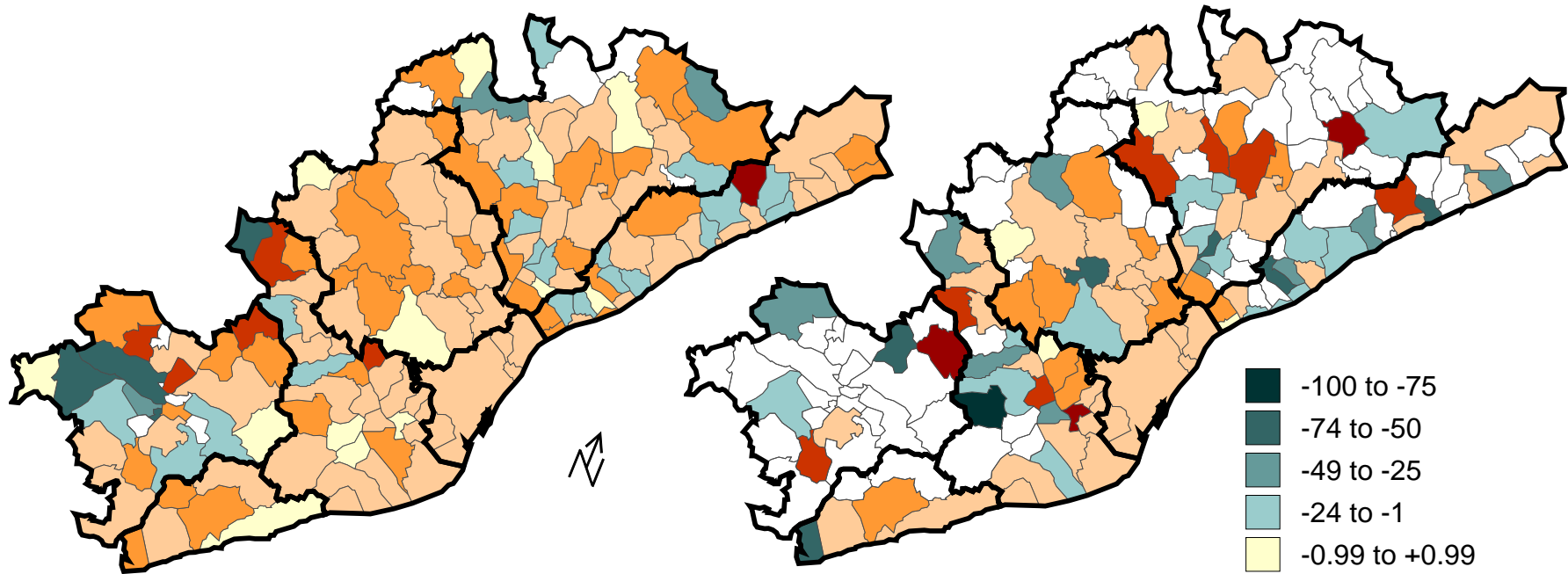




Migration effectiveness ratios in RMB by Non-Spanish, 2007

American

Asian





To sum up



Summary

1. Population growth after recent immigration to Barcelona
2. Segregation indices show greater evenness and exposure
3. Population re-distribution in the metropolitan area of Barcelona



Acknowledgements

- National Statistical Institute (aka, INE)
- Autonomous Statistical Institute (aka, Idescat)

Further information

asabater@ced.uab.es

jordibayona@ub.edu