

# Ward level migration of ethnic groups to concentrations of 'own ethnic group'

**Antonia Simon**  
**Research Officer**



[a.simon@ioe.ac.uk](mailto:a.simon@ioe.ac.uk)

# Is Britain becoming more ethnically segregated?

- **Segregation perceived as a negative feature of migration**
- **2001 race riots**
- **Promoting greater ‘community cohesion’**

## Is Britain ‘sleepwalking to segregation’?

**‘Increasingly, we live with our own kind. The most concentrated areas, what the social scientists call “ghettos”, aren’t all poverty stricken and drug ridden. But they are places where more than two-thirds of the residents belong to a single ethnic group’**

**(Phillips, 2005)**

## Key hypotheses

- **‘White-flight’ and ‘White-avoidance’**
- **Self-segregation**
- **Schelling’s ‘Spatial Proximity Model’**
  - **Clark: preferences for living with neighbours of similar class and interests**
  - **Krysan: drawn to neighbourhoods with shared cultural background**

## British Research

- **Early focus on immigration & settlement**
- **More recently, included behaviour of minority groups**
- **Absence of ghettos**
- **District versus ward-level movement**

## 2 main research questions

**Inflow**  **High own concentration?**

**Outflow**  **Low own concentration?**

## Data Required

- **Census 2001**
- **Ethnicity**
- **Migration**
- **Ward-level**
- **Commissioned table**

## 8 categories of ethnicity provided

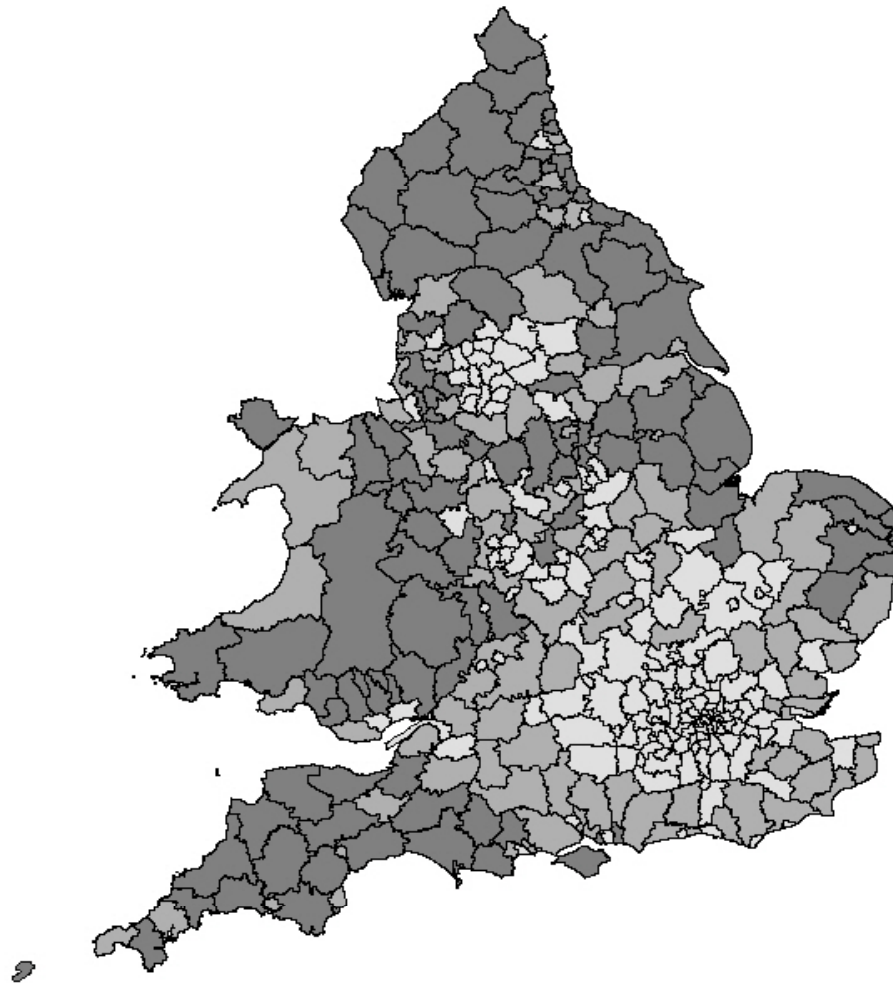
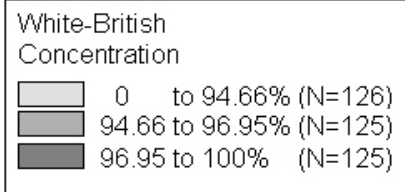
Main group	Ethnic category in commissioned table
<b>'Non-White' group</b>	<b>Indian</b>
	<b>Pakistani &amp; Bangladeshi</b>
	<b>Black</b>
	<b>Mixed</b>
	<b>Other ethnicities</b>
<b>'White' group</b>	<b>White-British</b>
	<b>White-Irish</b>
	<b>White-other</b>

## Internal migration categories

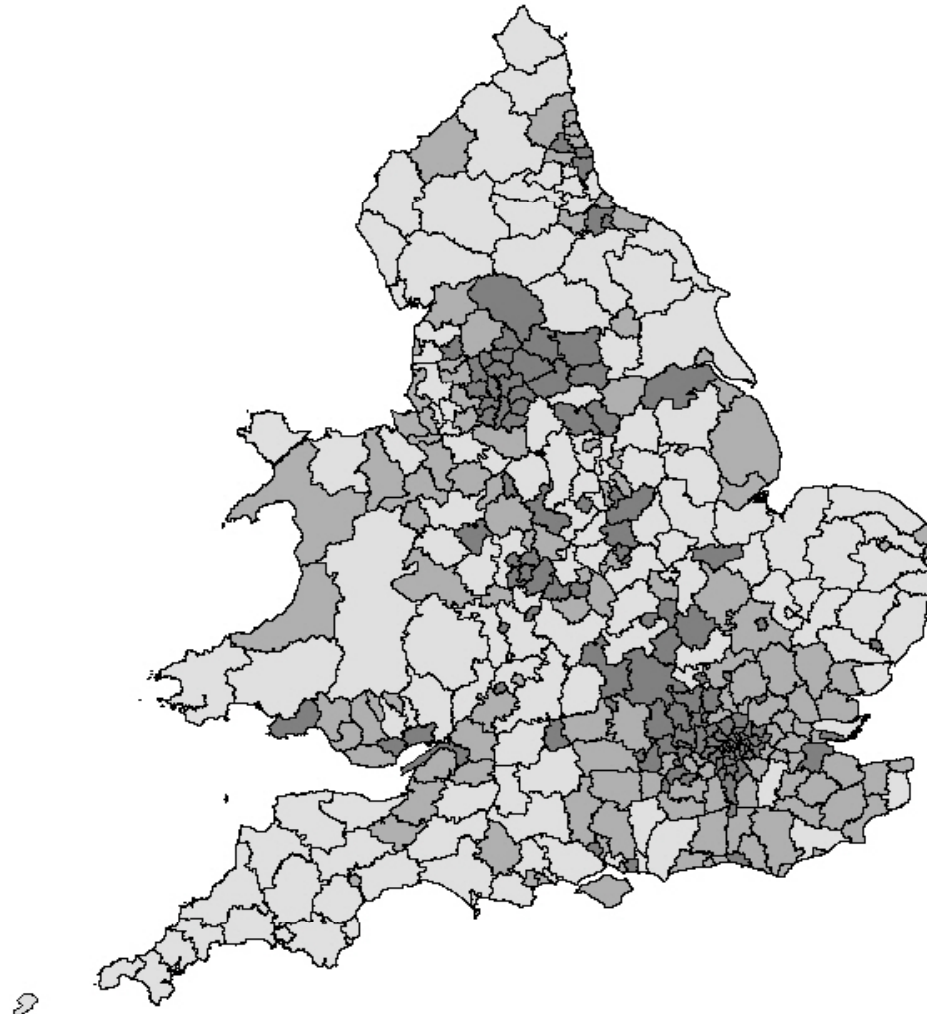
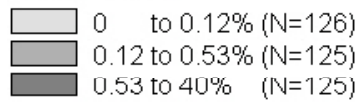
- **Lived at same address**
- **Lived elsewhere: same area 1 year ago**
- **No usual address 1 year ago**
- **Inflow / Outflow**
- **Small / large: between wards within district or between wards across different districts**

## Measures of movement and concentration

- **Simpson's (2006) 'Index of movement'**
- **Inflow/Outflow**
- **Concentration as a % of residents in a ward**



Pakistani and Bangladeshi  
Concentration



## Movement towards 'own group'

Ethnic group		Net migration 2000-01, per cent of 2001 population				
		Lowest concentration	Low concentration	Medium concentration	High concentration	Highest concentration
Non-White (NW)	<b>Inflow</b>	11.88	10.75	9.16	7.89	<b>5.99</b>
	<b>Outflow</b>	10.70	9.61	9.25	8.59	<b>7.15</b>
	<b>Net</b>	1.18	1.14	-0.09	-0.70	<b>-1.16</b>
White combined	Inflow	10.31	8.30	7.69	7.24	6.78
	Outflow	11.02	8.36	7.37	6.81	6.28
	Net	-0.71	-0.06	0.32	0.43	0.50

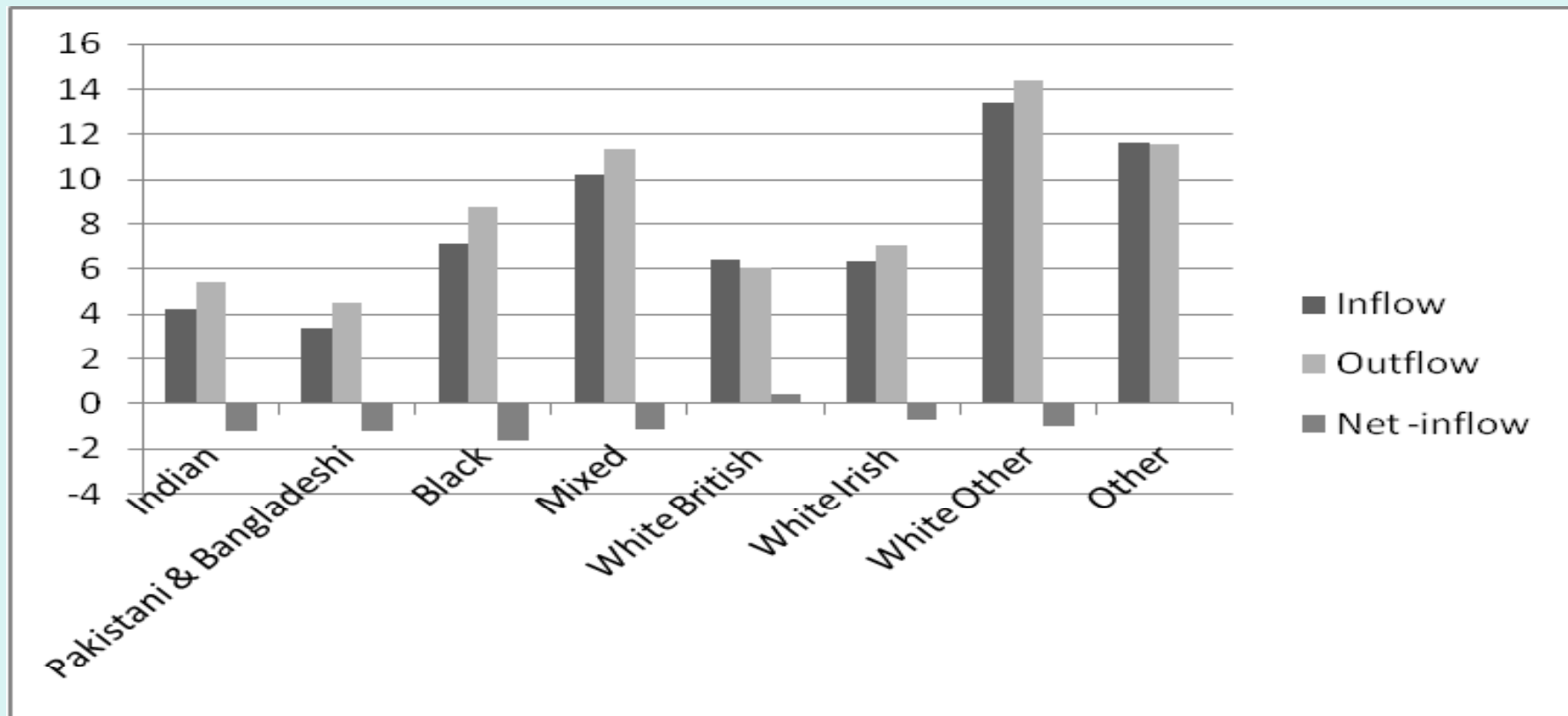
# Movement towards 'own group'

Ethnic group		Net migration 2000-01, per cent of 2001 population				
		Lowest concen'tion	Low concen'tion	Medium concen'tion	High concen'tion	Highest concen'tion
Non-White (NW)	Inflow	<b>11.88</b>	10.75	9.16	7.89	5.99
	Outflow	<b>10.70</b>	9.61	9.25	8.59	7.15
	Net	<b>1.18</b>	1.14	-0.09	-0.70	-1.16
White combined	Inflow	10.31	8.30	7.69	7.24	6.78
	Outflow	11.02	8.36	7.37	6.81	6.28
	Net	-0.71	-0.06	0.32	0.43	0.50

## Movement towards 'own group'

Ethnic group		Net migration 2000-01, per cent of 2001 population				
		Lowest concen'tion	Low concen'tion	Medium concen'tion	High concen'tion	Highest concen'tion
Non-White (NW)	Inflow	11.88	10.75	9.16	7.89	5.99
	Outflow	10.70	9.61	9.25	8.59	7.15
	Net	1.18	1.14	-0.09	-0.70	-1.16
White combined	<b>Inflow</b>	10.31	8.30	7.69	7.24	<b>6.78</b>
	<b>Outflow</b>	11.02	8.36	7.37	6.81	<b>6.28</b>
	<b>Net</b>	-0.71	-0.06	0.32	0.43	<b>0.50</b>

# Highest concentration quintile



# How far do socio-economic factors predict movement towards own group?

- **rural-urban characteristic**
- **housing tenure**
- **employment rate of the ward**

## Rural-urban characteristic

- **Most ethnic groups moved from:  
Urban to ‘Town/Fringe’ or ‘villages,  
hamlets and isolated dwellings’**
- **Greater inflow into urban areas for Indian,  
PB and Black groups**
- **Better predictor than concentration**

# Housing tenure categories

## **3 categories:**

- % local pop in owner-occupied accommodation**
- % local pop in social-rented accommodation**
- % local pop in private rented accommodation**

## Housing tenure: key findings

- **Most groups: movement into wards with > % of owner-occupied tenure or > % social-rented accommodation**
- **Exception – ‘Mixed’ ethnicities and ‘White-Irish’ group**
- **Better predictor than concentration**

## Some conclusions

- **Movement towards wards with least concentration of own ethnic group**
- **Concentration not the main predictor**
- **Other characteristics of the ward may be more important**