

Understanding ethnic differences in internal migration of young adults from a life stage perspective

Nissa Finney (University of Manchester)

Migration, Mixing and Ethnic Integration
A Session of the Population Geography Research Group
RGS-IBG 2009

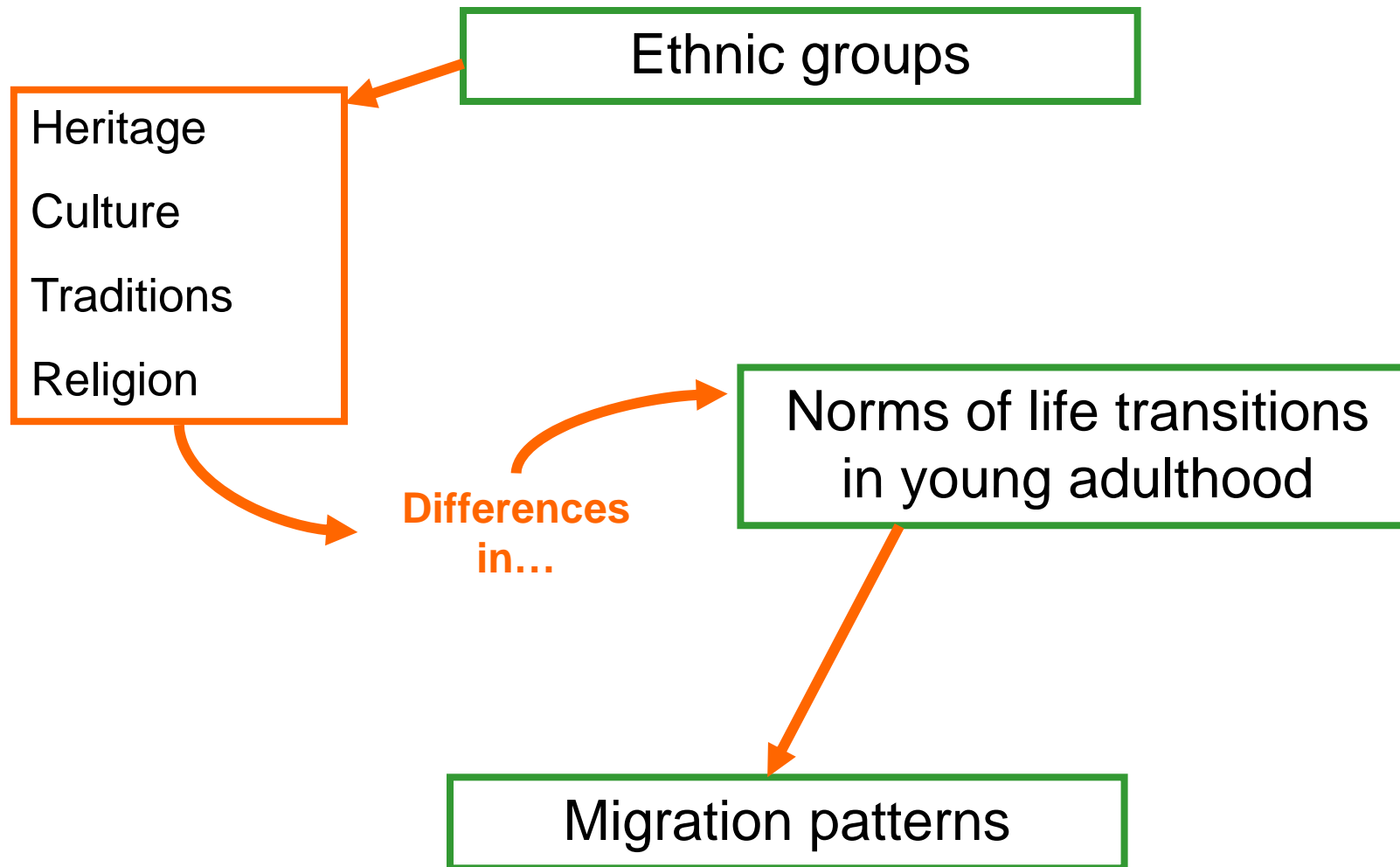
1. How is young adult internal migration distinct and is this so for each ethnic group?
2. Are events of young adulthood associated with migration in the same way for each ethnic group?
3. Is young adult migration contributing to ethnic residential mixing?

Responding to three calls from the literature:

- Lifecourse approach in internal migration studies (and geography)
(PSP 2008, Demographic research 2007, Hopkins and Pain 2007)
- Studies of sub-populations in lifecourse research
(Arnett 2004, Dannefer 2003)
- Processes of population change in ethnic residential integration studies
(Simpson et al 2008)

Relevant to policy debates:

- Understanding how housing needs may vary (or not) for different age and ethnic groups
- Identifying processes of ethnic residential mixing at different life stages

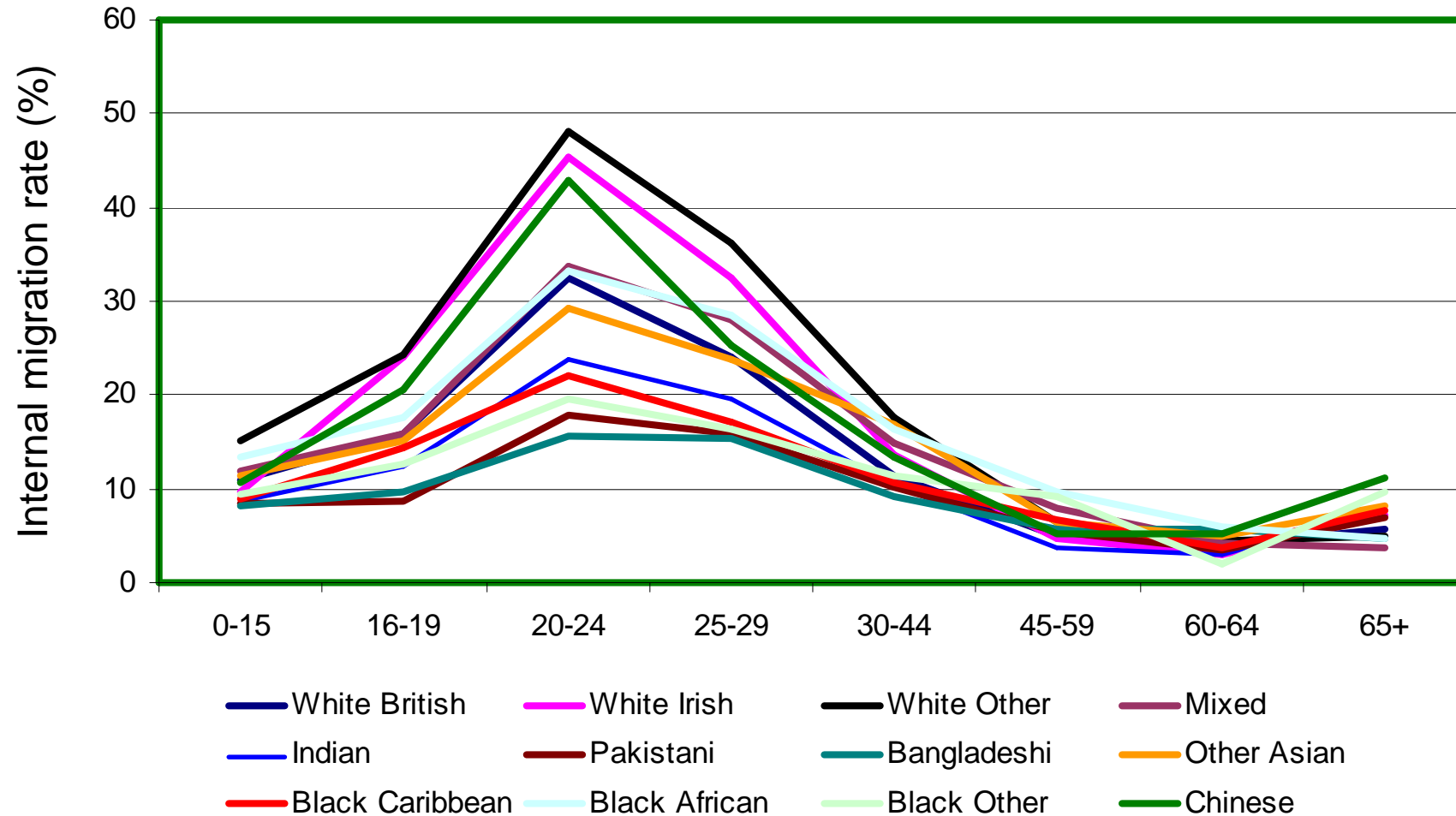


Data

2001 Census:

- Individual Sample of Anonymised Records
- Controlled Access Microdata Sample
(districts of GB)

Distinguishing young adult migration



- Migration peak in young adulthood is common to all ethnic groups
- But, young adults of some ethnic groups are more mobile than others

Source: 2001 Census SAR

Migration and transition to adulthood

Logistic regression:

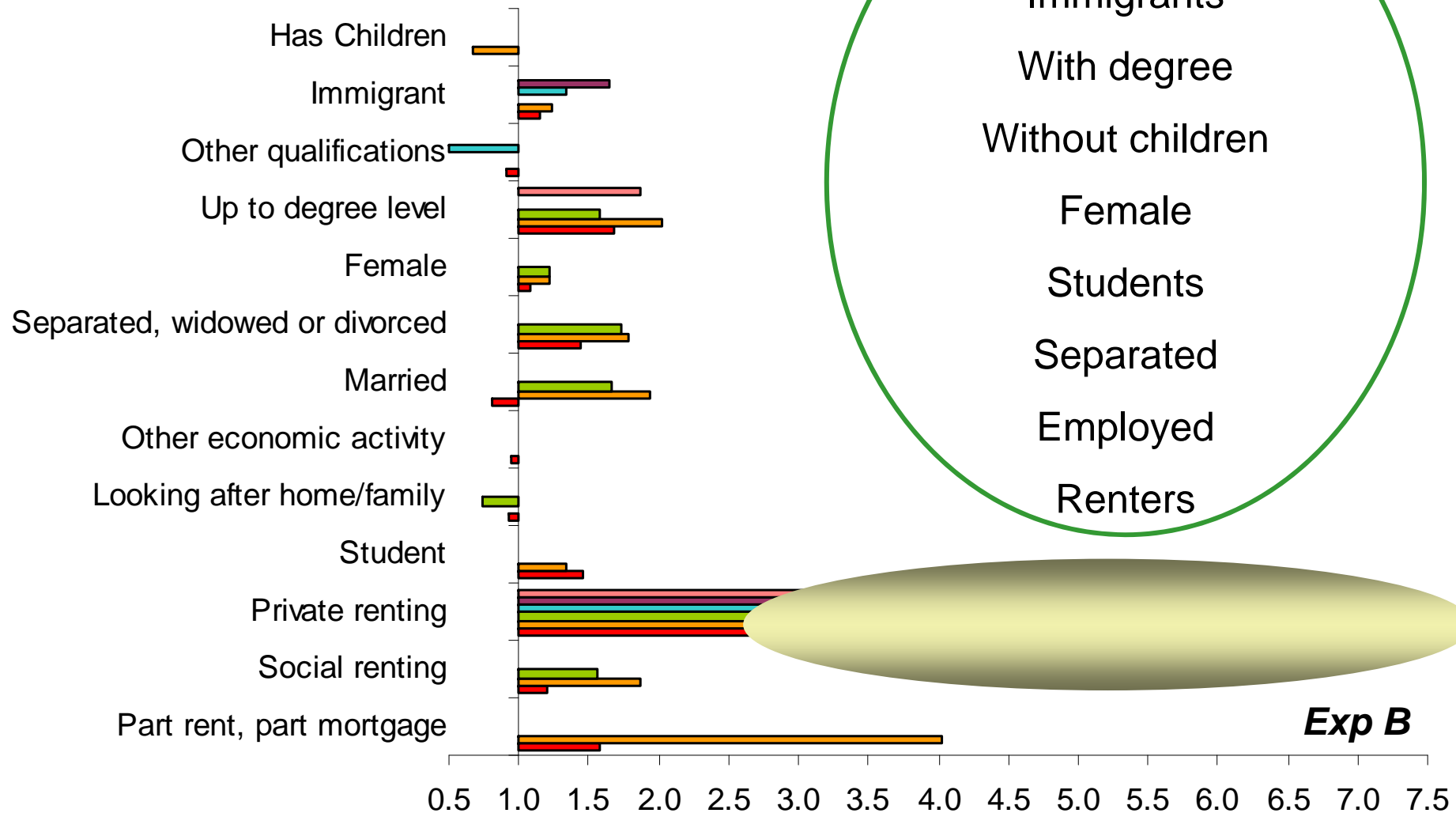
- Outcome: propensity to migrate
- Predictors: economic activity, marital status, qualifications, sex, tenure, immigrant status, whether has children.

For 20-29 year olds.

Separately for White, Indian, Pakistani & Bangladeshi, Caribbean, African and Chinese.

2001 Census SAR, GB.

Reference: home owner,
employed, single, male, GCSEs,
born in UK, without children



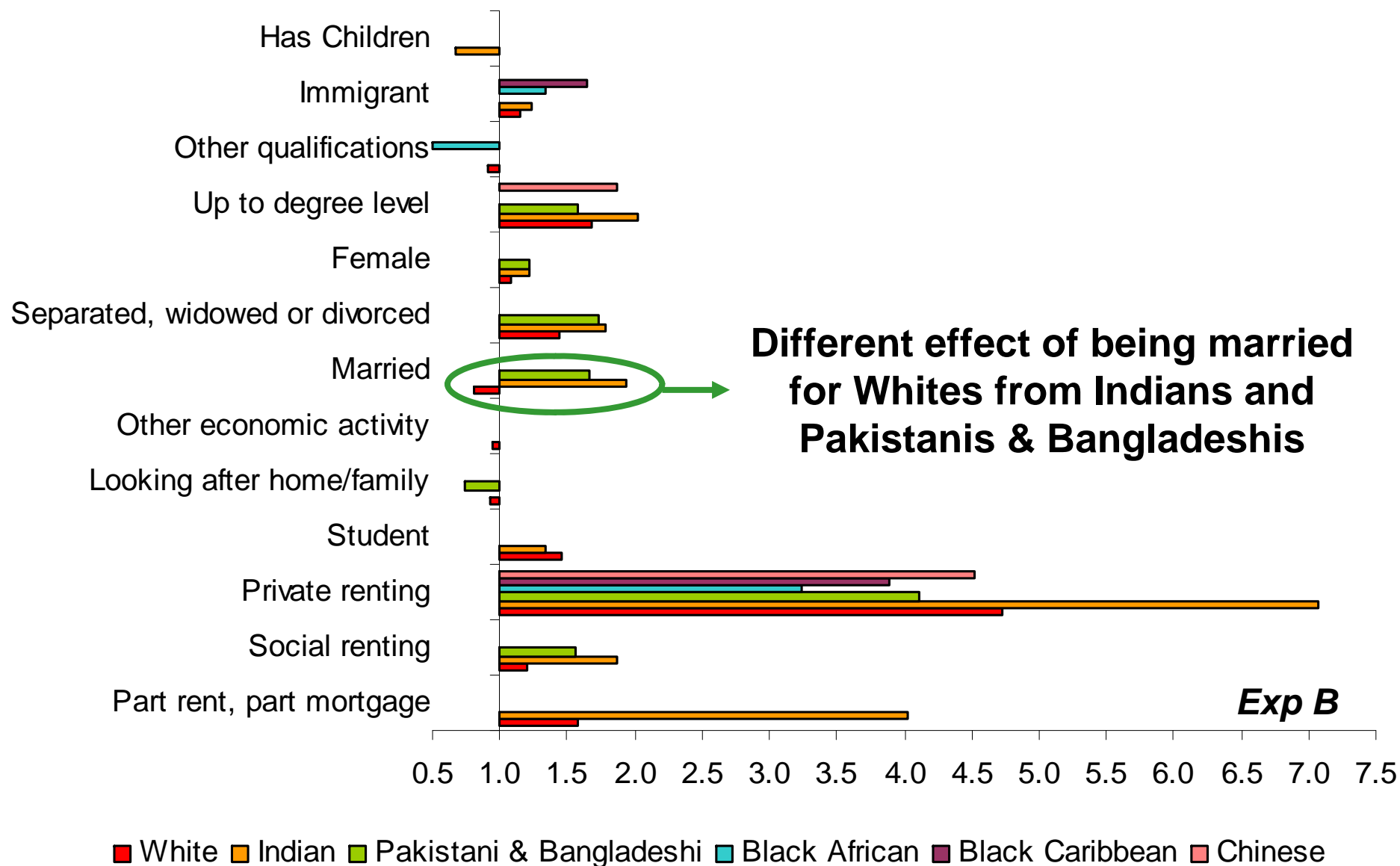
Most mobile are:

- Immigrants
- With degree
- Without children
- Female
- Students
- Separated
- Employed
- Renters

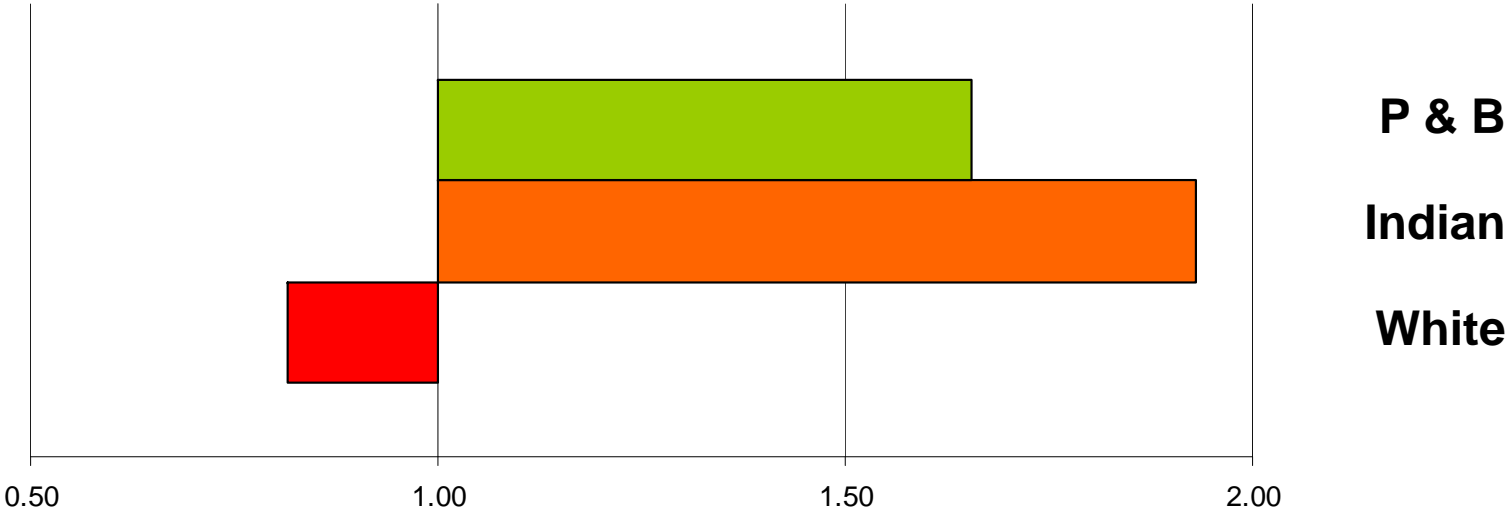
Exp B

■ White
 ■ Indian
 ■ Pakistani & Bangladeshi
 ■ Black African
 ■ Black Caribbean
 ■ Chinese

Reference: home owner,
employed, single, male, GCSEs,
born in UK, without children



Effect of being married



Migration associated with being married for Indians and Pakistani & Bangladeshis, especially females

Stabilising effect of being married for Whites

Reference: home owner, employed, single, male, GCSEs, born in UK, without children

Re-cap...

- All ethnic groups have peak migration for young adults, though mobility rates vary
- Being an immigrant, student, with degree, female, separated, employed, renter is associated with highest mobility for all groups
- Being married reduces mobility for Whites but increases it for South Asians

Young adult migration and ethnic residential mixing

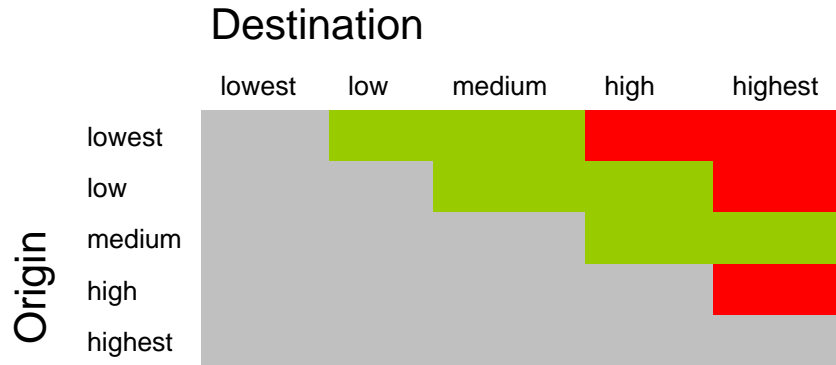
Migration Matrices

- Net flows between origins and destinations
- Districts grouped by concentration
 - Of non-Whites for non-White migration
 - Of Whites for White migration

2001 Census CAMS, GB.

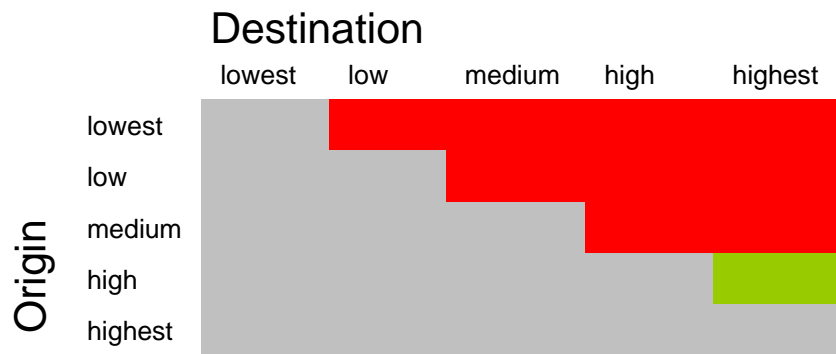
Young adults aged 18-29 / Other ages.

Migration of young adult non-Whites *Districts grouped by non-White concentration*



Convergence on 'middle ground': dispersal from highest concentration; movement to moderate and high concentration.

Migration of young adult Whites *Districts grouped by White concentration*

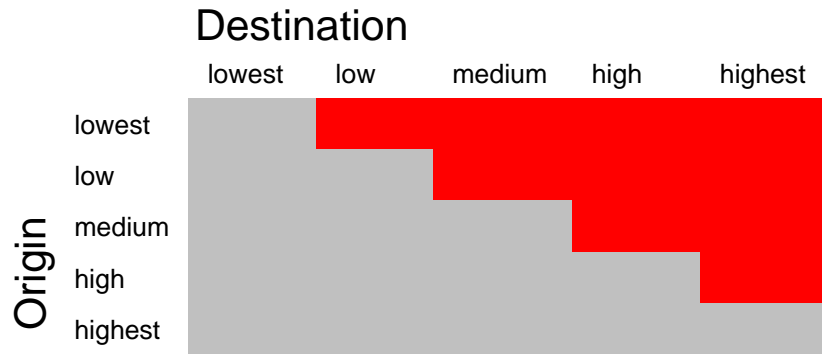


Dispersal from White areas; movement towards more ethnically mixed districts.

■ Destinations lose - dispersal

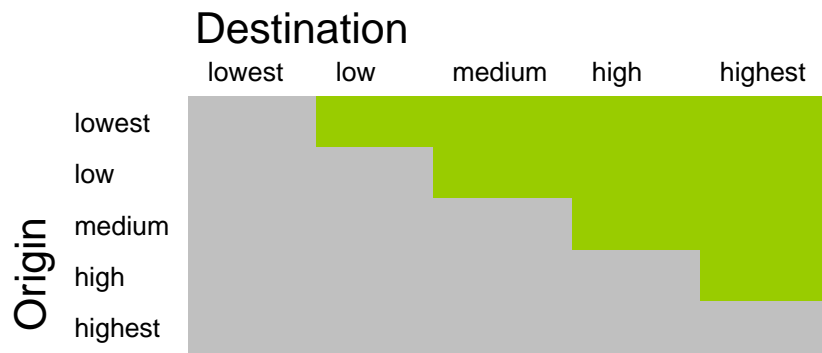
■ Destinations gain - concentration

Migration of non-Whites of other ages *Districts grouped by non-White concentration*



Dispersal: movement towards areas of lower non-White concentration.

Migration of Whites of other ages *Districts grouped by White concentration*



Concentration: movement towards areas of higher White concentration.

■ Destinations lose - dispersal

■ Destinations gain - concentration

- White and minority young adults are moving to ethnically mixed areas.
- Minorities and Whites of other ages are moving towards more White areas.

→ urbanisation of young adults and suburbanisation of other ages

→ Whites and minorities are moving to the same types of areas creating ethnic mixing

Conclusions

Peak of young adult migration and characteristics associated with this are common to ethnic groups

Being married is differently associated with migration for Whites and South Asians

Young adults (White and minority) create ethnic mixing by moving towards diverse areas....

...Other ages (White and minority) create ethnic mixing by moving towards White areas

References

- Arnett, J.J. (2004) *Emerging adulthood: the winding road from the late teens through the twenties* Oxford: OUP
- Dannefer, D. (2003) 'Toward a global geography of the life course: challenges of late modernity for life course theory' In Mortimer, J.T. and Shanahan, M.J. (eds) *Handbook of the Life Course* new York: Kluwer Academic/Plenum Publishers, pp 647-659
- Hopkins, P. and Pain, R. (2007) 'Geographies of age: thinking relationally' *Area* 39(3): 287-294
- Simpson, L., Gavalas, V. and Finney, N (2008) 'Population dynamics in ethnically diverse towns: the long-term implications of immigration' *Urban Studies* 45 (1): 163-184

Journal Special Issues:

- Population, Space and Place 14 (4) 'Migration in a Family Way' (2008)
- Demographic Research 17 (19) 'Family change and migration in the Life Course' (2007)