

# **The impacts of educational migration on community (religious) composition in Northern Ireland**

**Emma Hollywood and Ron McQuaid**  
Employment Research Institute  
Edinburgh Napier University

## Structure

- Background to research
- Data sources used
- Demographic context
- Migration in Northern Ireland
- Educational migration in NI
- Key drivers of educational migration
- Implications/conclusions

## Background

- Funded by the Equality Commission for Northern Ireland
- Research was carried out 2007-2008
- Main aim was to examine impacts of educational migration on community composition in Northern Ireland

## Data Sources

- UCAS (Universities and Colleges Admissions Service)
- HESA (Higher Education Statistics)
- Northern Ireland School Leavers Survey
- Multiple Deprivation Measures
- 2001 Census

## Demographic Background

- Increase in population in the last 30 years
- Ageing population structure
- Predicted decline in 15-24 age group

## Community composition of the NI population

- 53% of population Protestant and 44% Roman Catholic (2001, Census)
- The representation of Roman Catholics amongst the Northern Ireland adult population has increased over the period 1990 - 2005 (LFS)
- The Protestant population has an older age profile than the Roman Catholic population.

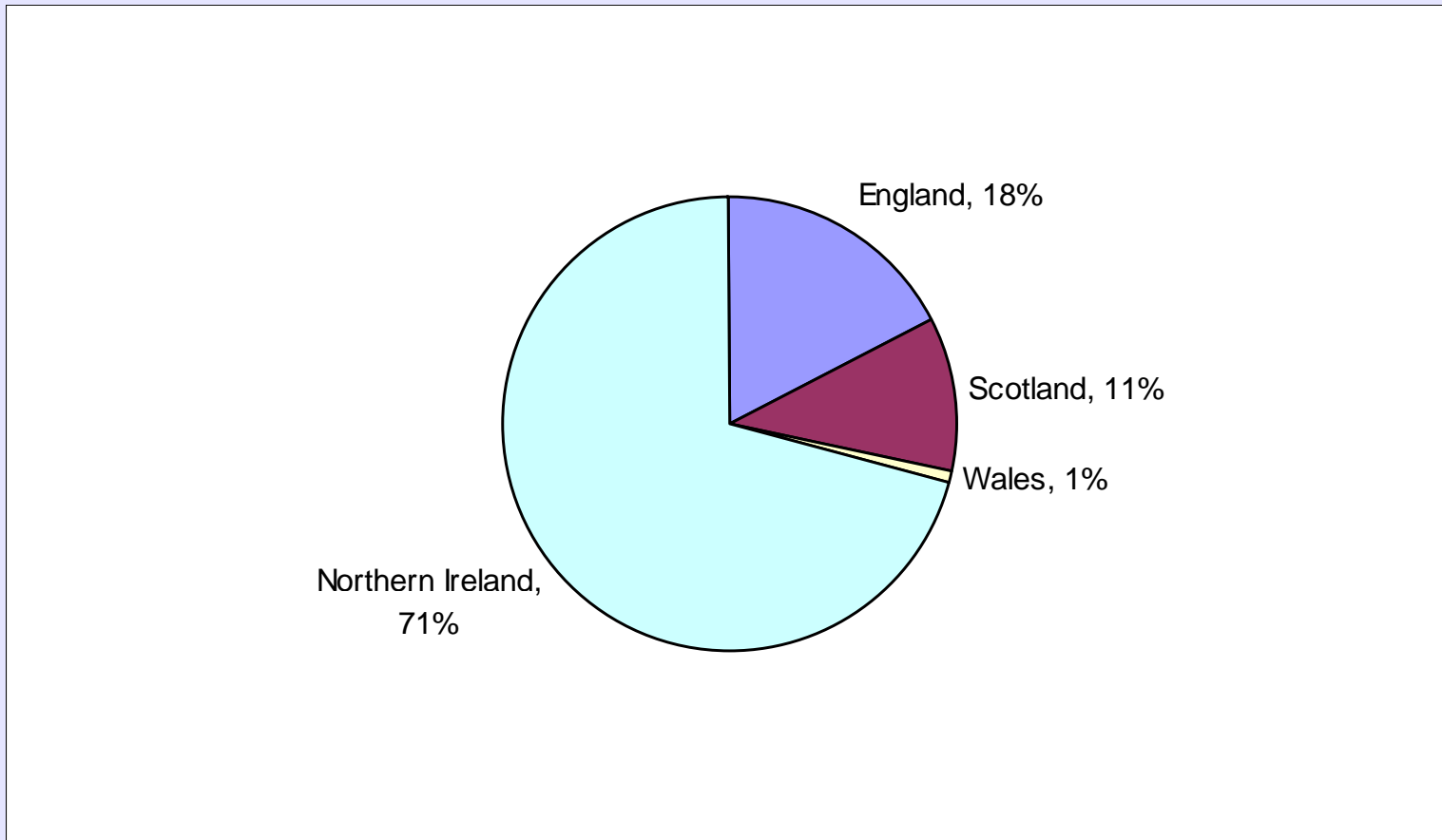
## Migration in Northern Ireland

- Migration has played an important part in the demographic profile of NI
- During the 1970s and 1980s, NI experienced consistently large net population loss due to out migration
- Recent years have seen population gain through migration
- Continue to lose population through migration in the 15-24 age group

## Educational migration in NI

- One of the key features of HE participation in NI is the out migration of NI students to GB
- During 1970s 40-45% of students were recorded as migrants
- Those from the protestant community higher tendency to migrate to GB

## Destination of NI domiciled students 2005/6



## Key drivers of educational migration

- Community background
- Social class
- Social deprivation

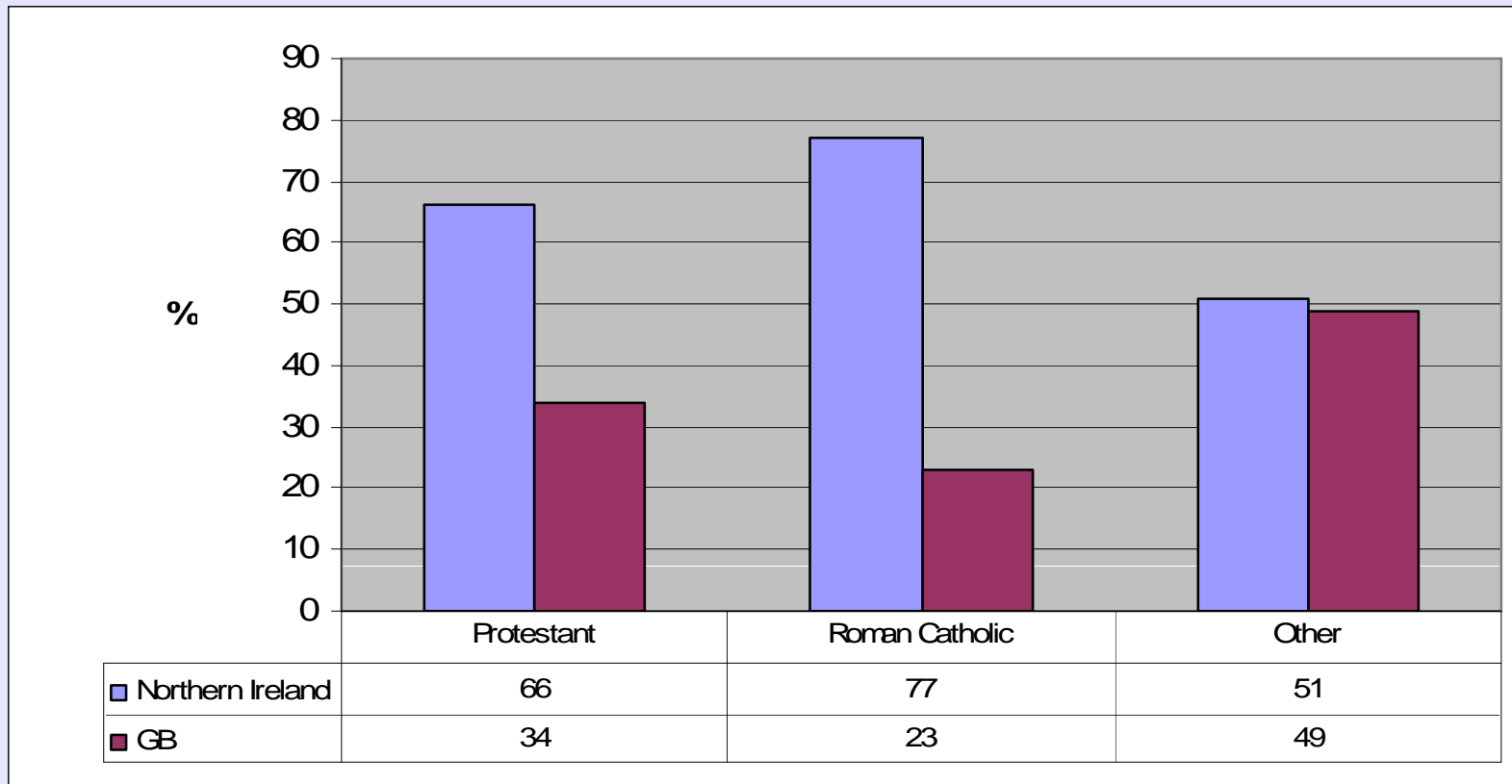
## Educational attainment by community background 2005/6

- Roman Catholic school leavers tend to be better qualified- 47% of Roman Catholics have 2 or more 'A' levels on leaving school, compared to 41% of Protestants.
- For boys, 38% of Roman Catholic school leavers have 2 or more 'A' levels compared to 34% of Protestant boys.
- 57% of Roman Catholic girls and 49% of Protestant girls leave school with two or more 'A' levels.

## Progression to higher education by community background, 2005/6

- Progression to Higher Education-Girls 44%; Boys 31%
- Boys- Roman Catholic 32.7%; Protestant 27.4%
- Girls- Roman Catholics 47.8%; Protestant 40.0%

## HE destinations by community background, 2006

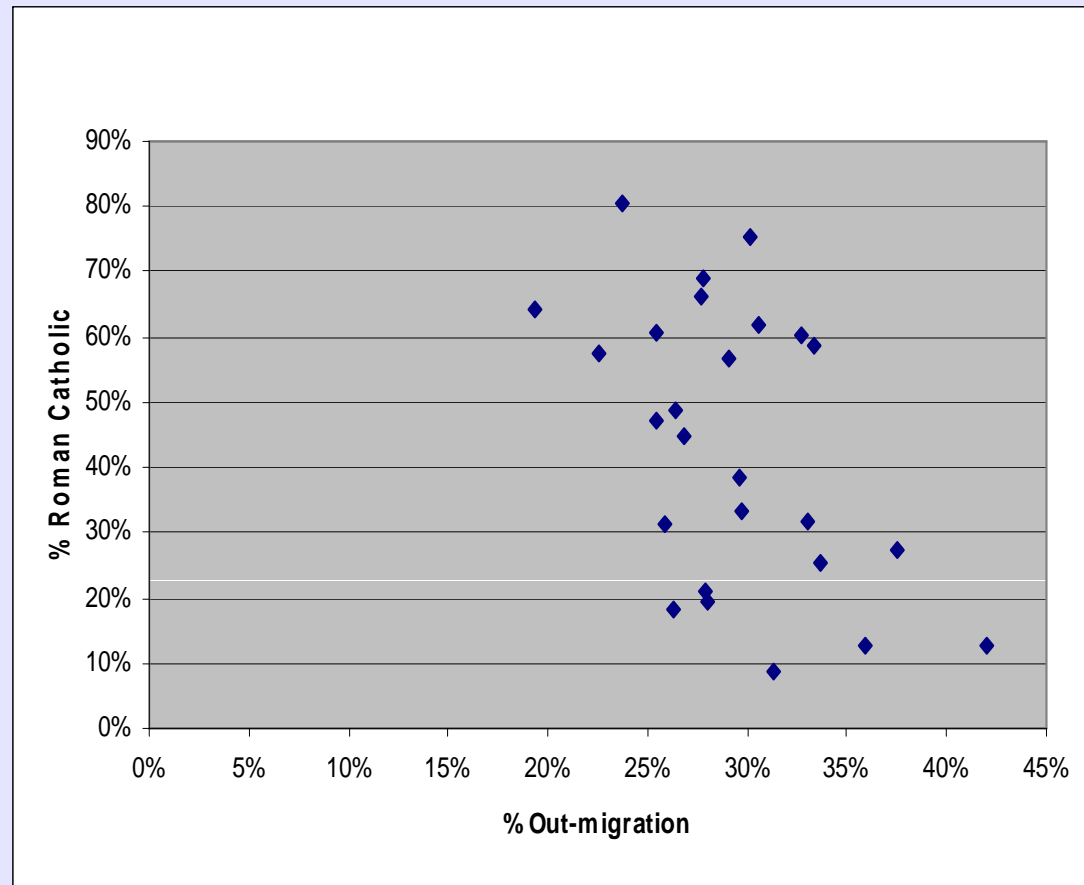


## Migration and social disadvantage

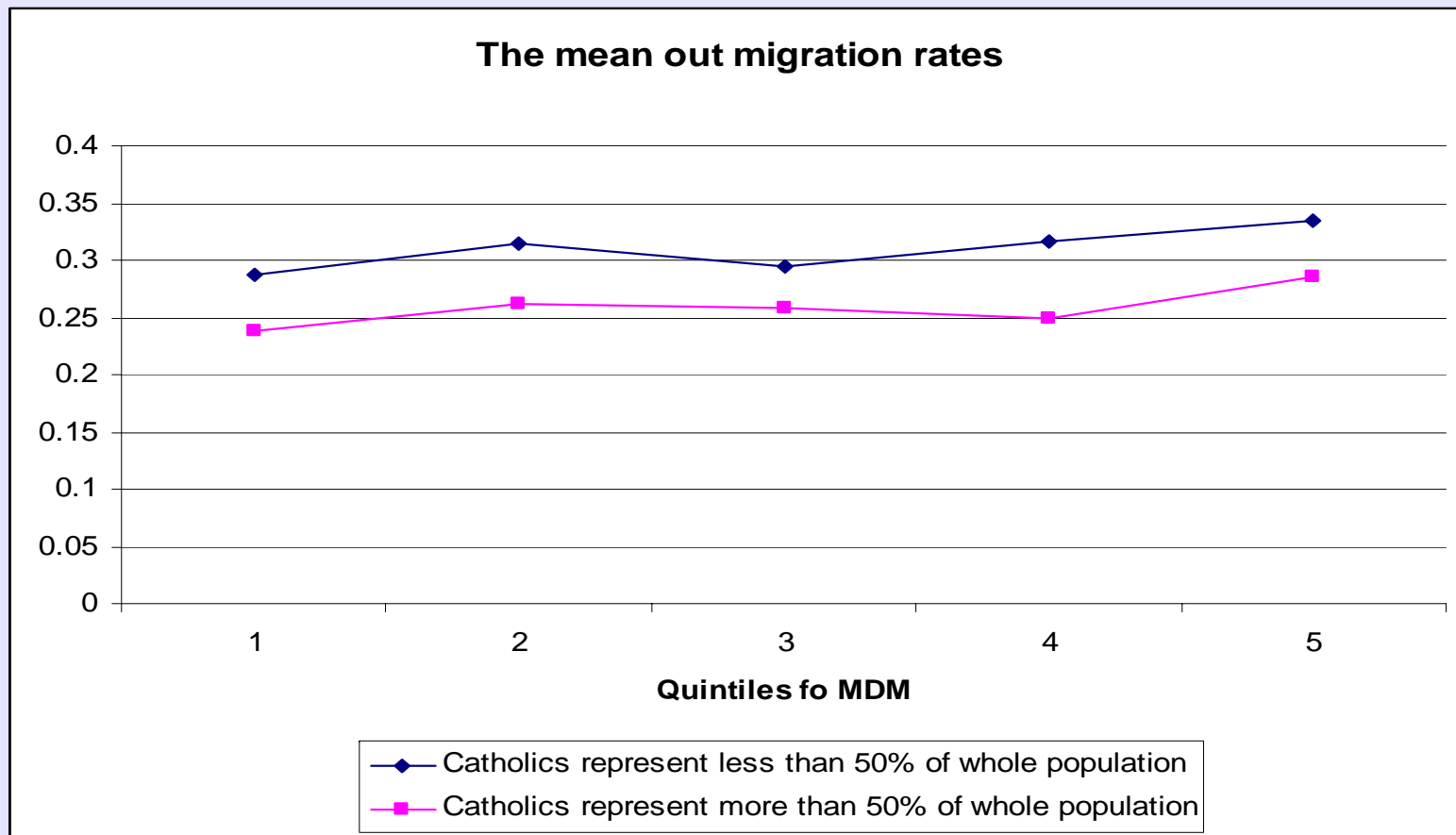
- Strong relationship between social class and migration propensities-those from higher social classes typically more likely to migrate in order to study
- There is a general link between the level of deprivation or disadvantage in an area where the student lives and the likelihood of going to HE in NI or GB
- NI performs well in term of access to HE for those from lower socio-economic groups (although still underrepresented)

## Educational migration and community background

- Areas with a higher proportion of Roman Catholics have a lower educational out-migration rate



## The average out migration rate for wards, considering community background populations and levels of deprivation



## Implications/conclusions

- Research highlighted the importance of community (religion) in understanding educational migration in the NI context
- Shows that community background still influences educational migration flows.
- Need for more detailed data on religion